

Fountain Covers

The perfect winter care accessories, Henri Fountain Covers provide maximum protection for cast stone fountains that would otherwise be exposed to harsh winter weather and ice damage. Henri Fountain Covers are specifically designed and shaped for fountains, with bottom tie nylon draw strings for a snug and secure fit. Manufactured of durable, reinforced polyethylene, Henri Fountain Covers are waterproof and U.V. Stabilized—and they are reusable year after year. Available in seven sizes to fit a range of fountains.



Available in 7 Sizes:

Fitting a fountain:

FC22B	Bubbler	H. 46 in x W. 36 in	H. 42 x W. 35
FC22S	Small	H. 46 in x W. 36 in	H. 42 x W. 32
FC22M	Medium	H. 58 in x W. 49 in	H. 54 x W. 45
FC22L	Large	H. 66 in x W. 56 in	H. 62 x W. 52
FC22L+	Large Plus	H. 85 in x W. 85 in	H. 81 x W. 81
FC22XL	Extra Large	H. 94.5 in x W. 105 in	H. 90 x W. 101
FC22XXL	Super Large	H. 83 in x W. 137 in	H. 79 x W. 133



FC22B



Underground Basins

Henri premium quality underground basins are the foundations for striking pondless water features. Both basins are constructed of heavy duty plastic with self-supporting tops to hold a wide range of spouting features, from cast stone to bronze. A clever hatch allows easy access to the pump. Creative pondless water features are beautifully executed with Henri's premium underground basins.



UG200
Underground 20 Gallon
Pondless Basin, 1 pc.
H. 10 in, W. 24 in, F-B 24 in

Supports up to 200 lbs.



UG300
Underground 32 Gal. Pondless
Basin, 1 pc.
H. 13 in, Diam. 32 in

Supports up to 400 lbs.

Copper Spray Rings

Henri spray rings provide a classic water display long associated with sparkling, traditional designs.

Heavy Duty Spray Rings

Heavy duty spray rings are high-volume displays usually used in larger water designs for maximum visual and aural effect. The large diameter of the water streams produces a dramatic display that minimizes water loss cause by wind deflection. Henri heavy duty spray rings are hand made of 1½ inch copper tubing.

Medium Duty Spray Rings

Medium duty spray rings are also high-volume displays, but more for mid-size water designs for a larger visual effect. Similarly, Henri Medium duty spray rings are hand made, and are made of ¾ inch copper tubing.

Specifications:

Heavy Duty Ring: ½ inch copper tube construction

Medium Duty Ring: ¾ inch copper tube construction

Jets: 1 piece swivel brass jet, tapped and soldered into ring tube, with 0.1 inch orifice

Both, Heavy Duty and Medium duty rings, are mounted on three removable, rubber capped legs. The spring-loaded brass nozzles swivel to accommodate variations in pitch--inward, outward or vertical. The nozzles' brass sleeves are tapped and soldered into the ring and unscrew for easy cleaning. These rings are available in several diameters, ranging from 20 to 144 inches, and can also be custom fabricated to order.



Underwater Lights

Henri low-voltage underwater lights are ideal for fountains and ponds. Our energy-saving LED spotlight kits include transformer and interchangeable color lenses; our single light kit is also available in halogen light version for greater intensity. Add a dramatic, shimmering night time experience to water features with Henri low-voltage underwater lights.

1. AB871 Underwater Single Light Kit - Halogen
2. AB871L Underwater Single Light Kit - LED
3. AB873L Underwater Triple Light Kit - LED
4. AB874L Underwater Four Light Kit - LED



5. AB870* "Silver" Plume Light Kit - LED
6. AB870L* "Black" Plume Light Kit - LED
7. AB880* Large "Silver" Plume Light Kit - LED

* Also available as a 3-Lense Light Kit (AB____-3)



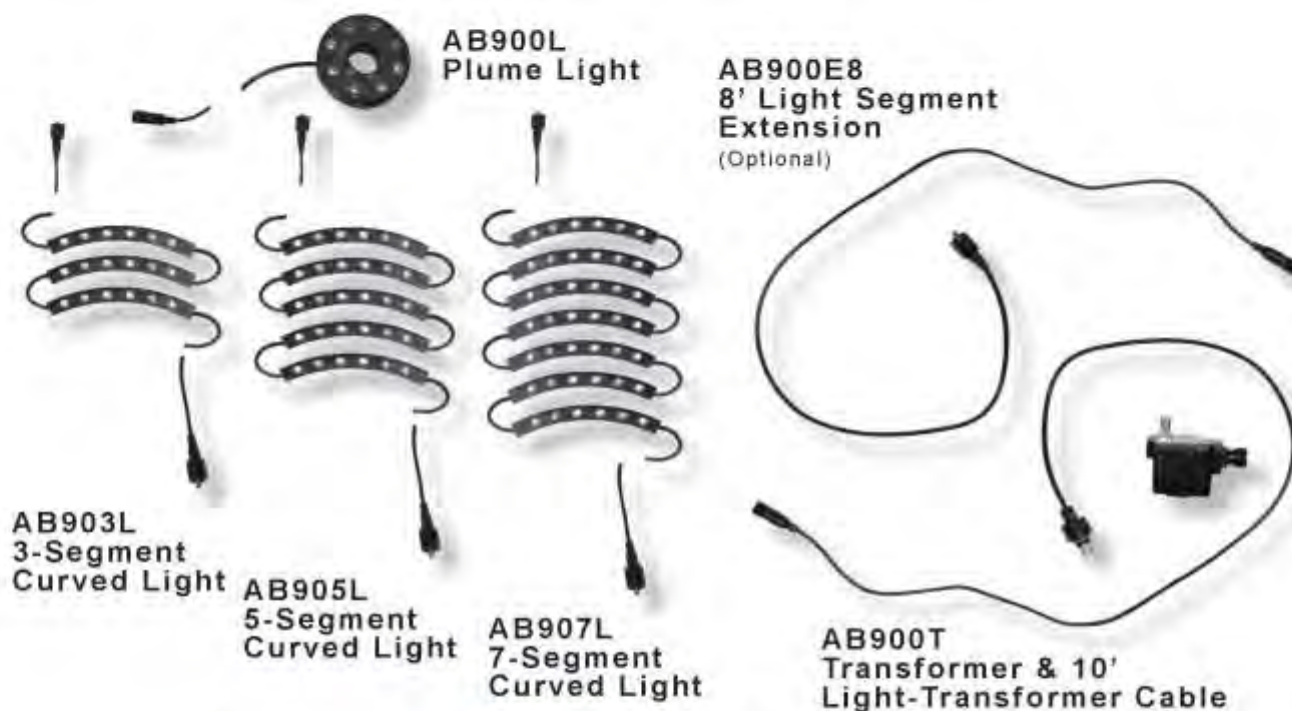
8. AB100 RGB Rope Light Kit with Remote - LED



9. AB900 Series - See Tiered Fountain Lights - LED

Tiered Fountain Lights

Our new lighting kits for Tiered Fountains are combinable in a multitude of configurations. Each Segment (Plume, 3 light, 5 light or 7 light) as well as the extender and transformer are purchased separately, giving ultimate flexibility. Lights are connected in series providing an easy flow thru installation.



Pumps

Every Henri fountain comes complete with pump! But Henri dealers make it a point to stock additional pumps for replacements, customer projects, and add-on sales. Henri pumps are submersible recirculating pumps for continuous use in water applications. Available in both magnetic and direct-drive models, Henri pumps are engineered for long life and are UL/CUL approved. Their compact design and superior performance make Henri pumps ideal for decorative fountains, ponds, and virtually any water feature.

Magnetic Drive Pumps

- High-value, high-tech design
- Energy and cost-efficient, with replaceable impellers

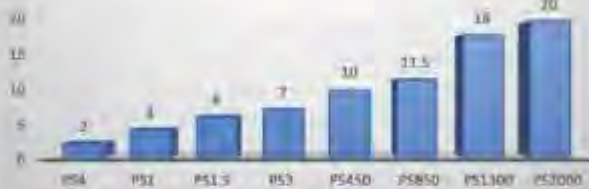
MODEL NO.	FLOW RATE	MAX HEAD	CORD LENGTH	WATTS /AMPS
PS4	90 GPH	2'	6'	5 / 0.08
PS1	180 GPH	4'	6'	12 / 0.20
PS1.5	235 GPH	6'	6'	16 / 0.23
PS3	325 GPH	7'	15'	25 / 0.4
PS450	450 GPH	10'	25'	60 / 0.58
PS850	850 GPH	11'6"	25'	99 / 1.5
PS1300	1300 GPH	18'	25'	190 / 2.6
PS2000	2000 GPH	20'	33'	190 / 2.8

Direct-Drive Drive Pumps

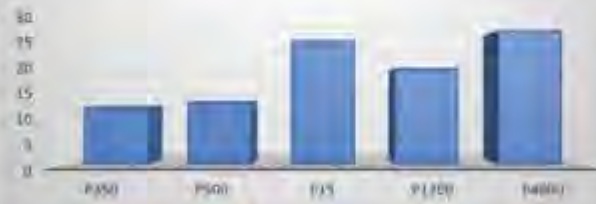
- Powerful, premium design
- Maximum head pressure and lift

MODEL NO.	FLOW RATE	MAX HEAD	CORD LENGTH	WATTS /AMPS
P350	300 GPH	12'	25'	47 / 0.8
P500	475 GPH	13'	25'	80 / 1.41
P1200	1200 GPH	20'	20'	255 / 3.4
P15	1200 GPH	26'	15'	360 / 5
P4000	4000 GPH	28'	20'	520 / 4.5

Mag-Drive Pumps - Max Head (ft)



Direct-Drive Pumps - Head (ft)



Mag-Drive Pumps - Flow Rate (GPH)



Direct-Drive Pumps - Flow Rate (GPH)

